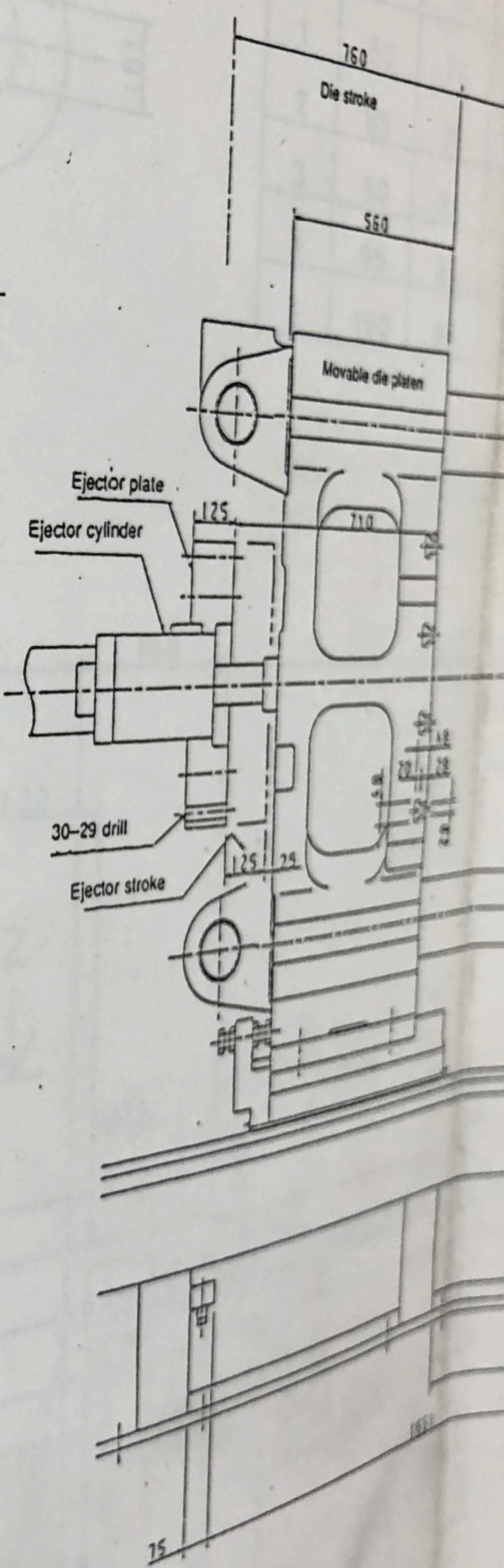
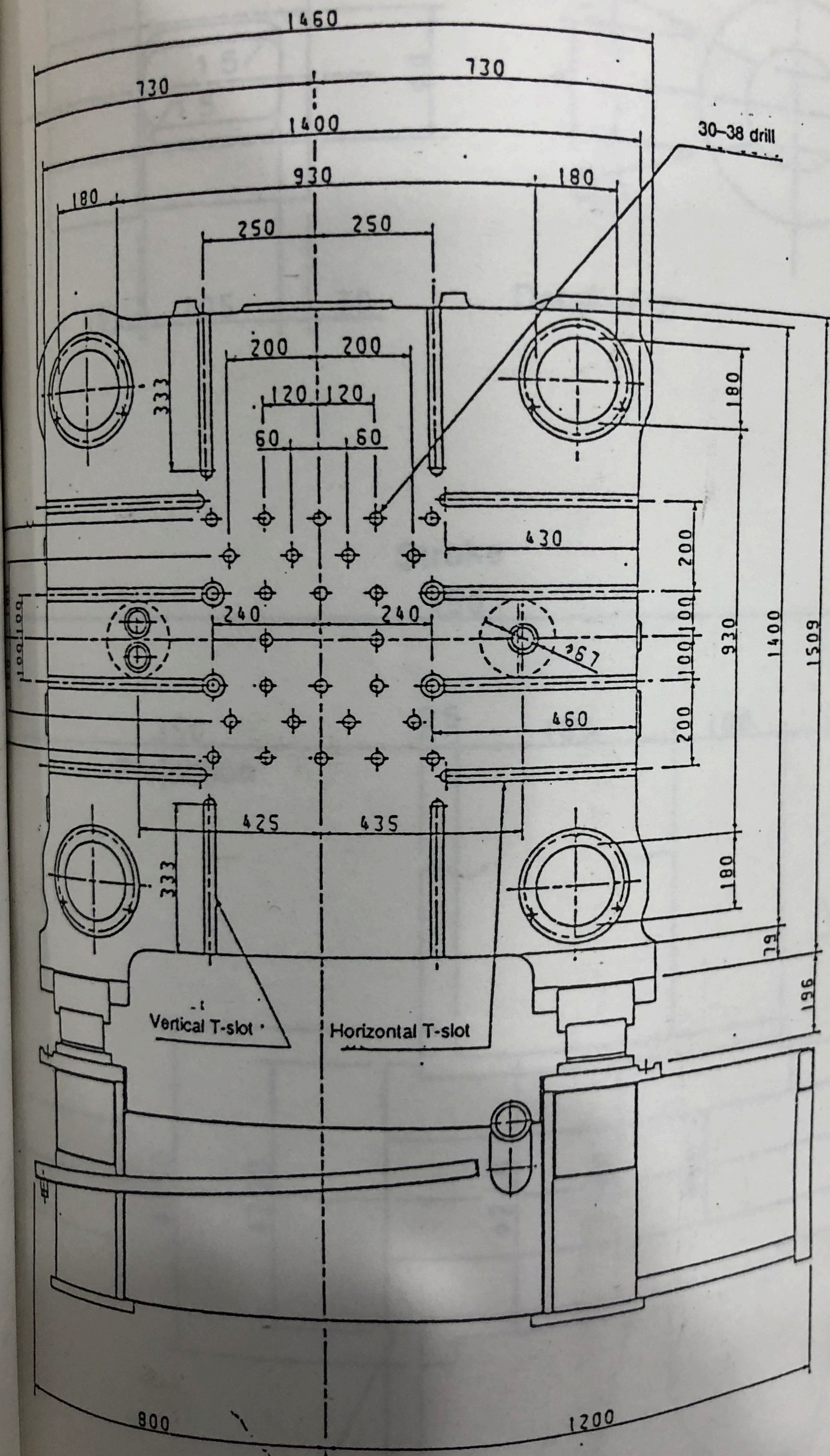


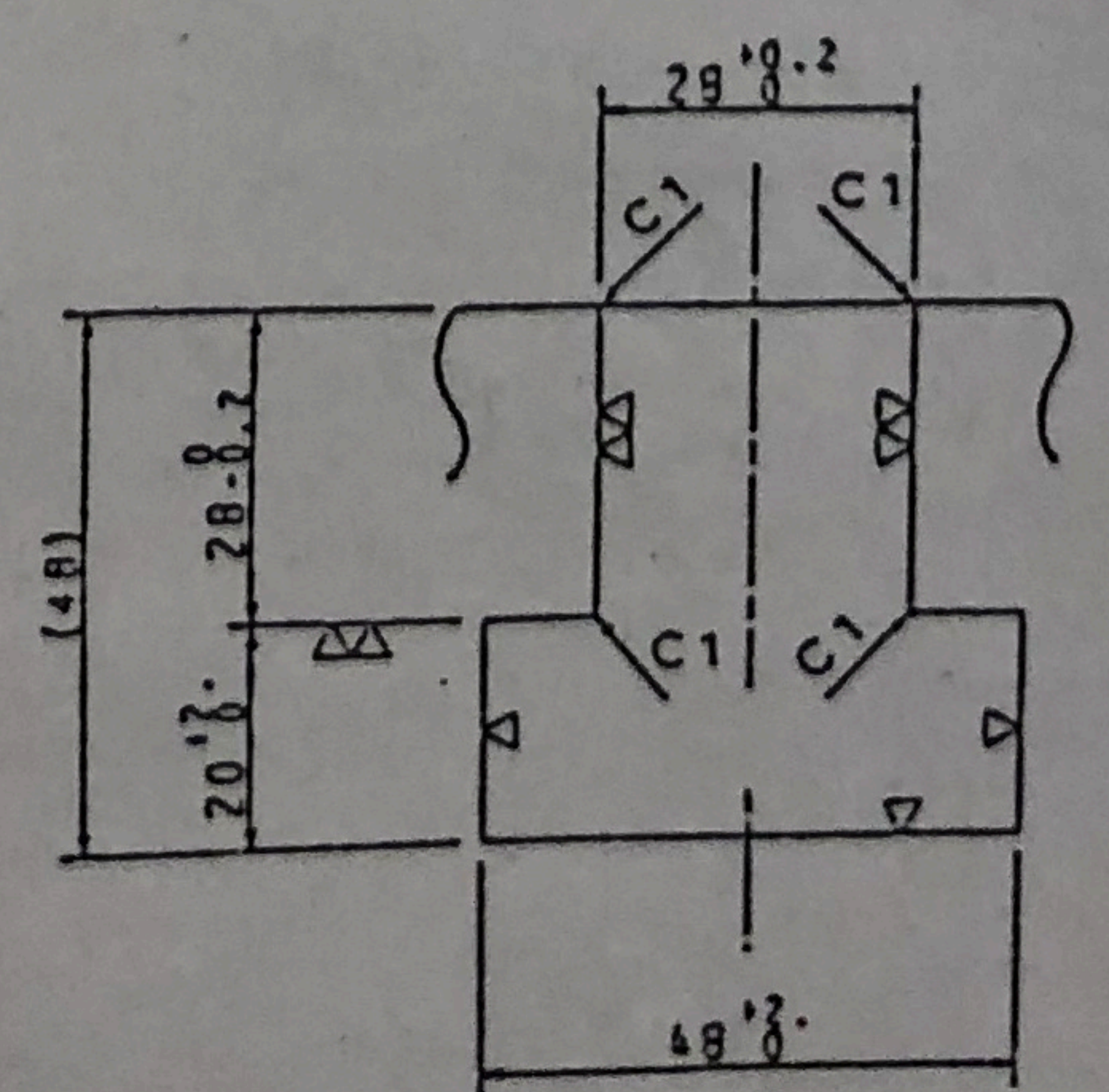
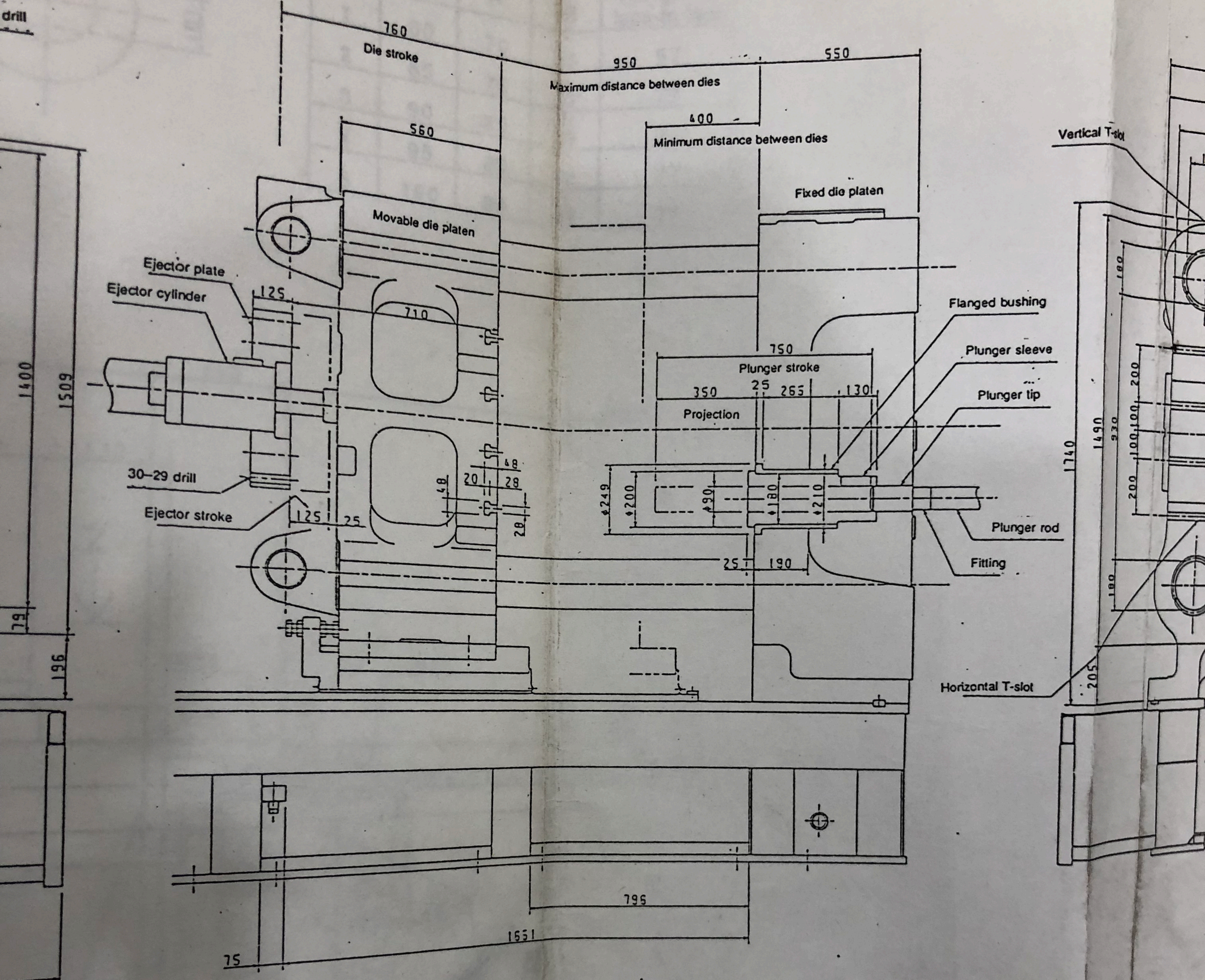
F 30165



Movable die platen

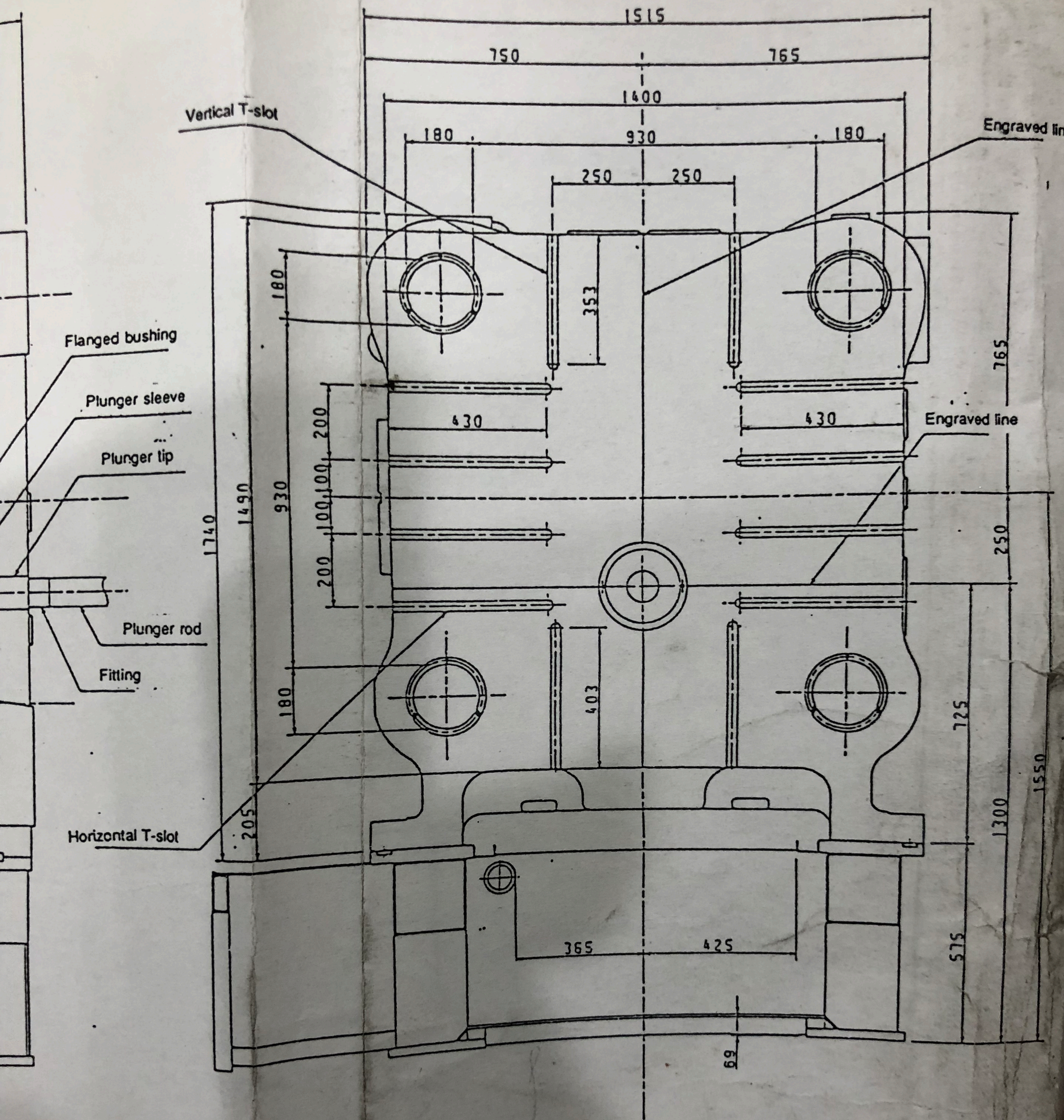


drill

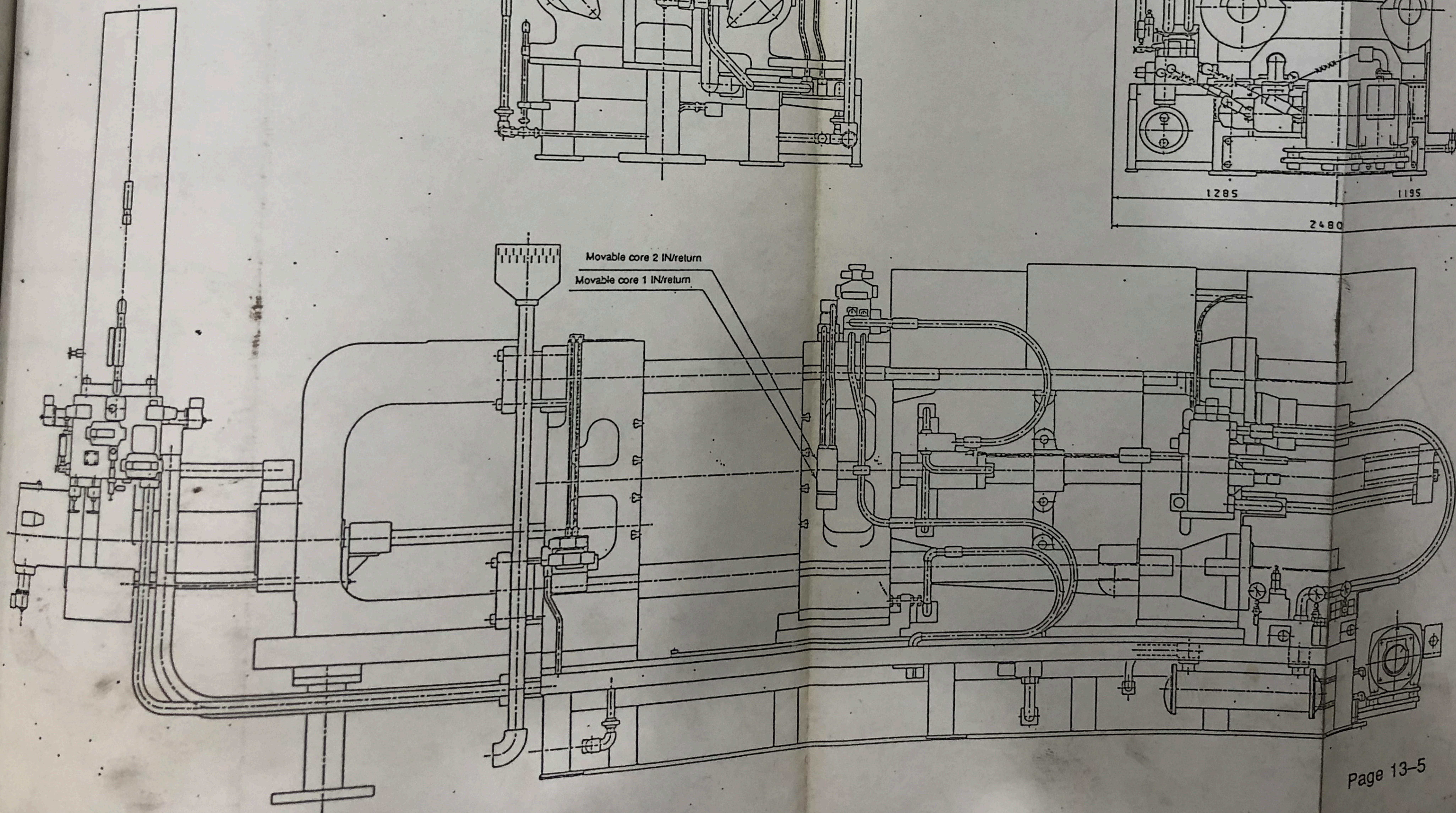
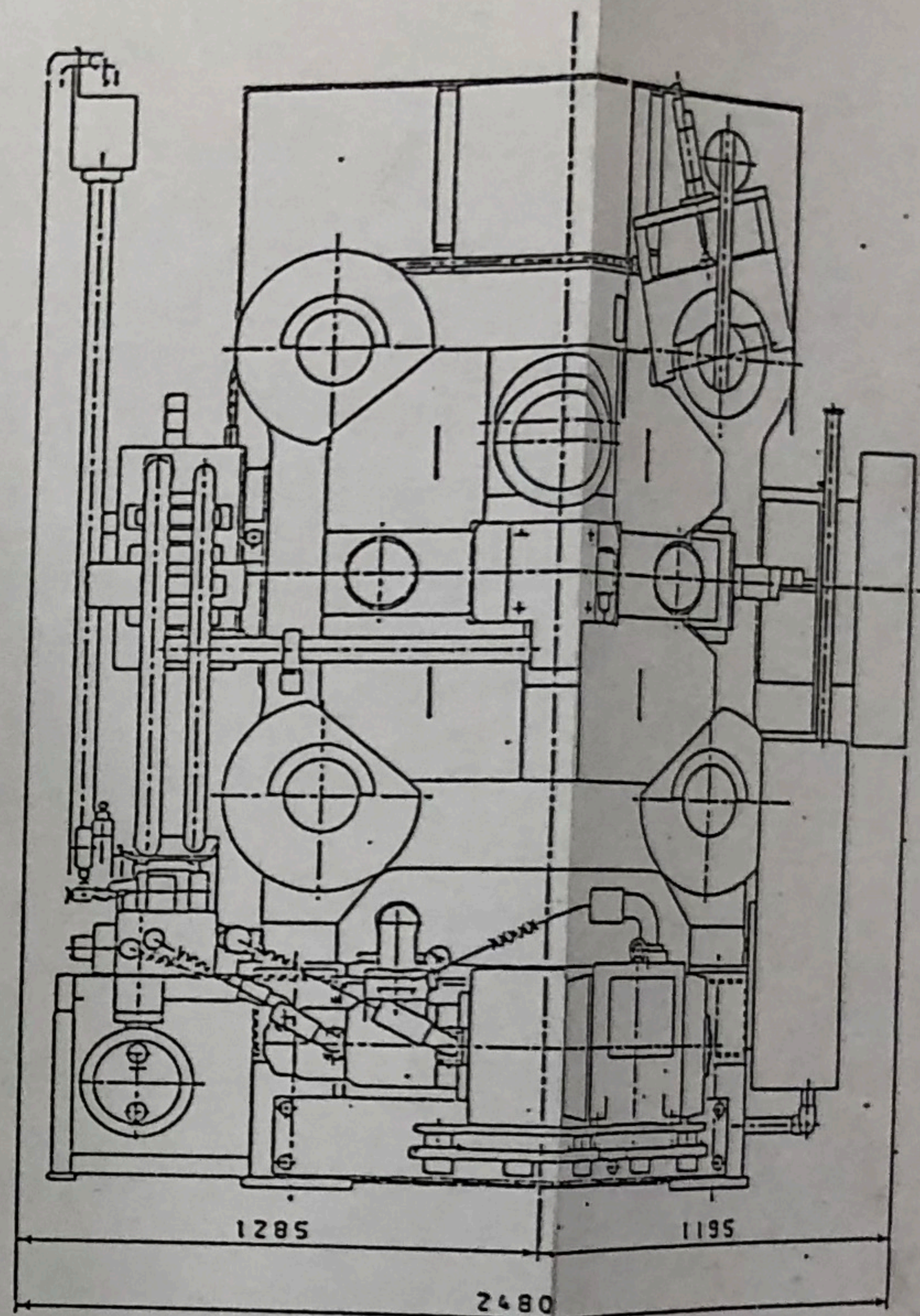
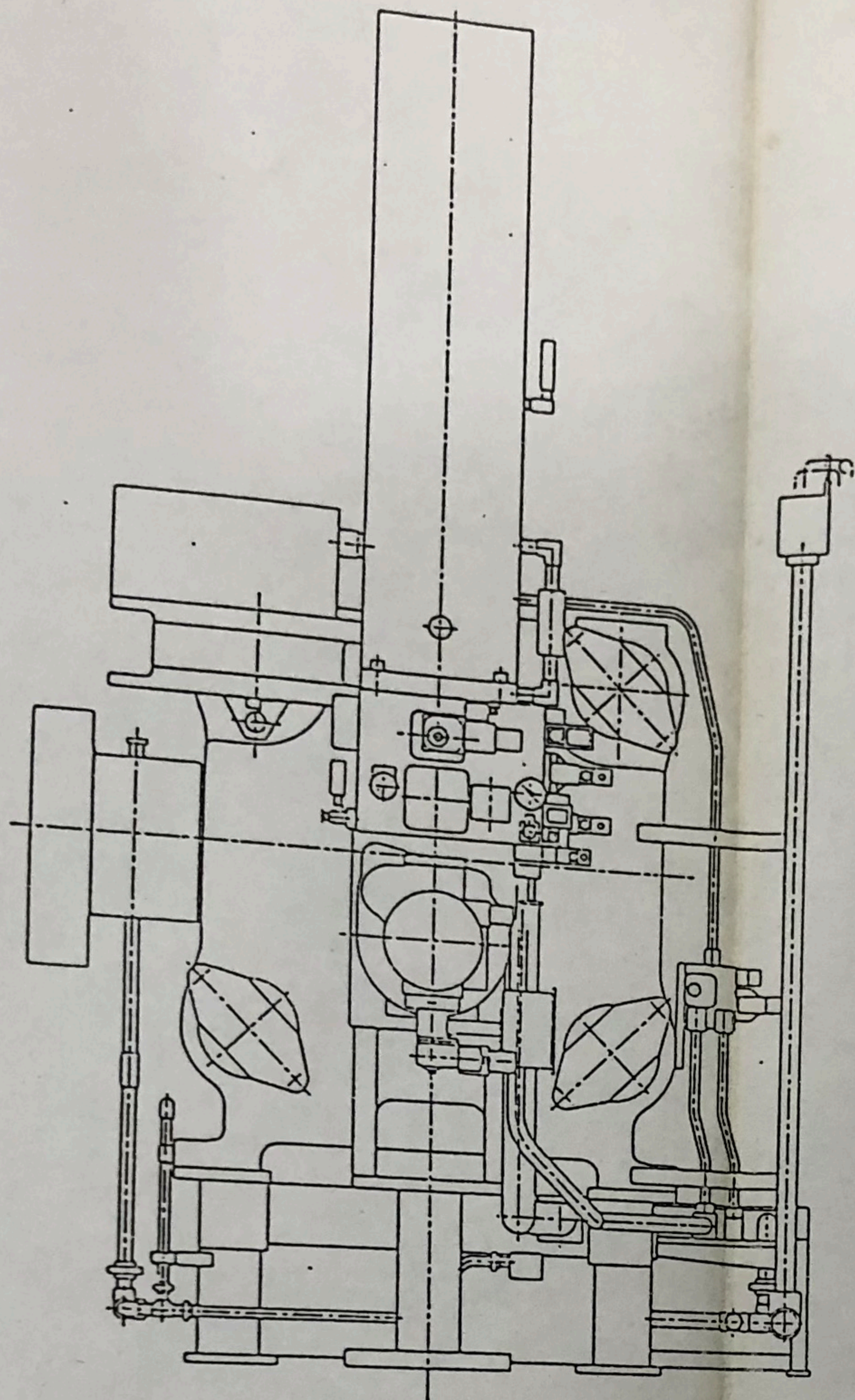


24 T-slots machined  
Use M24 bolts.

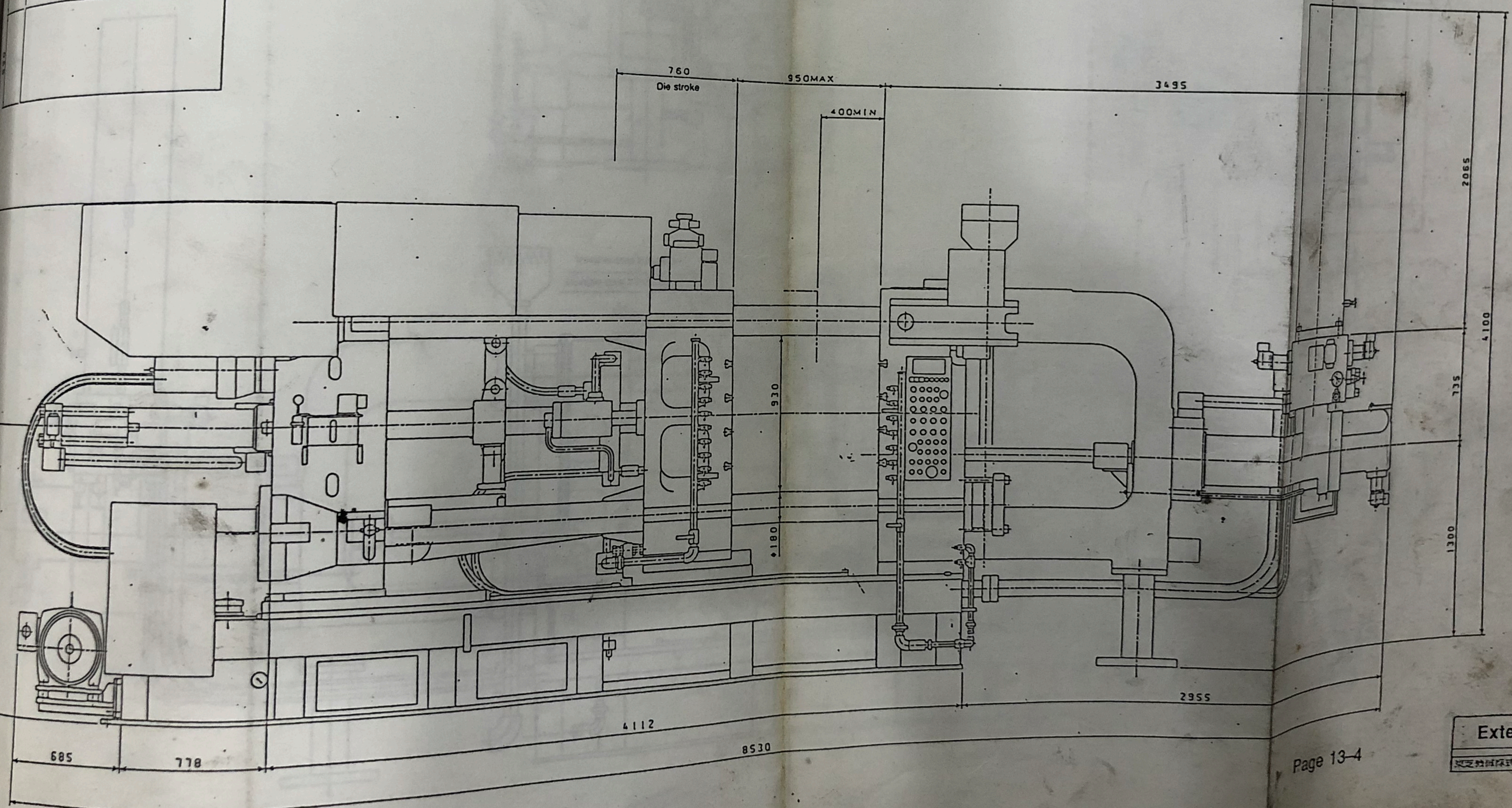
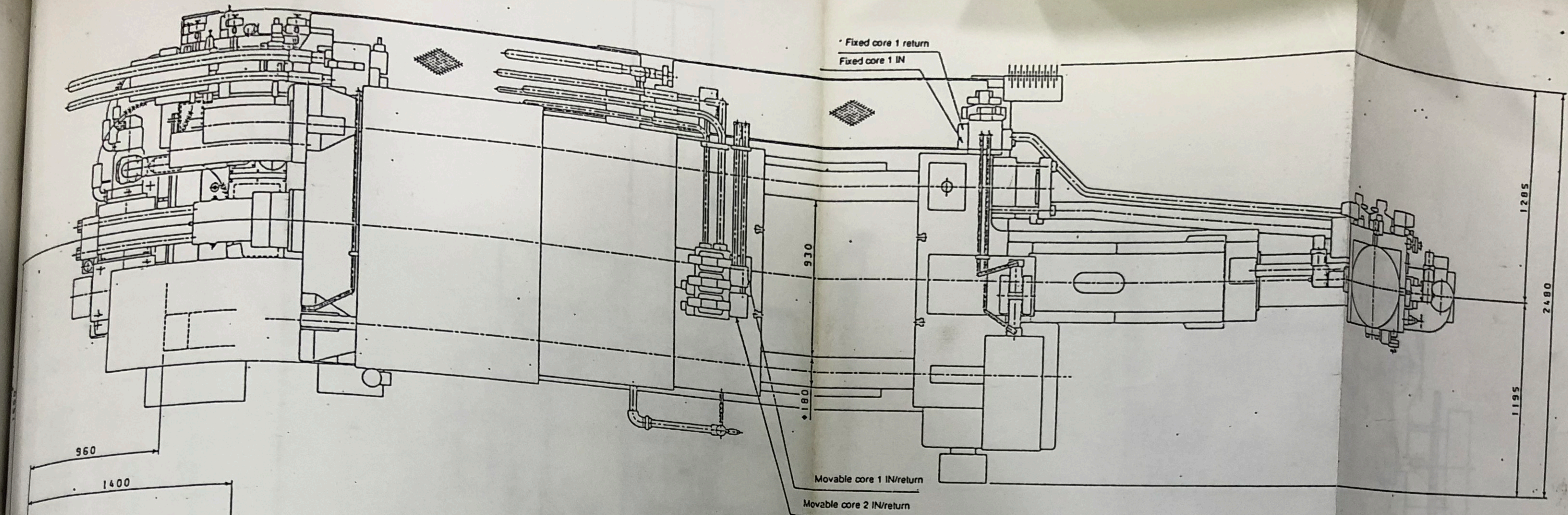








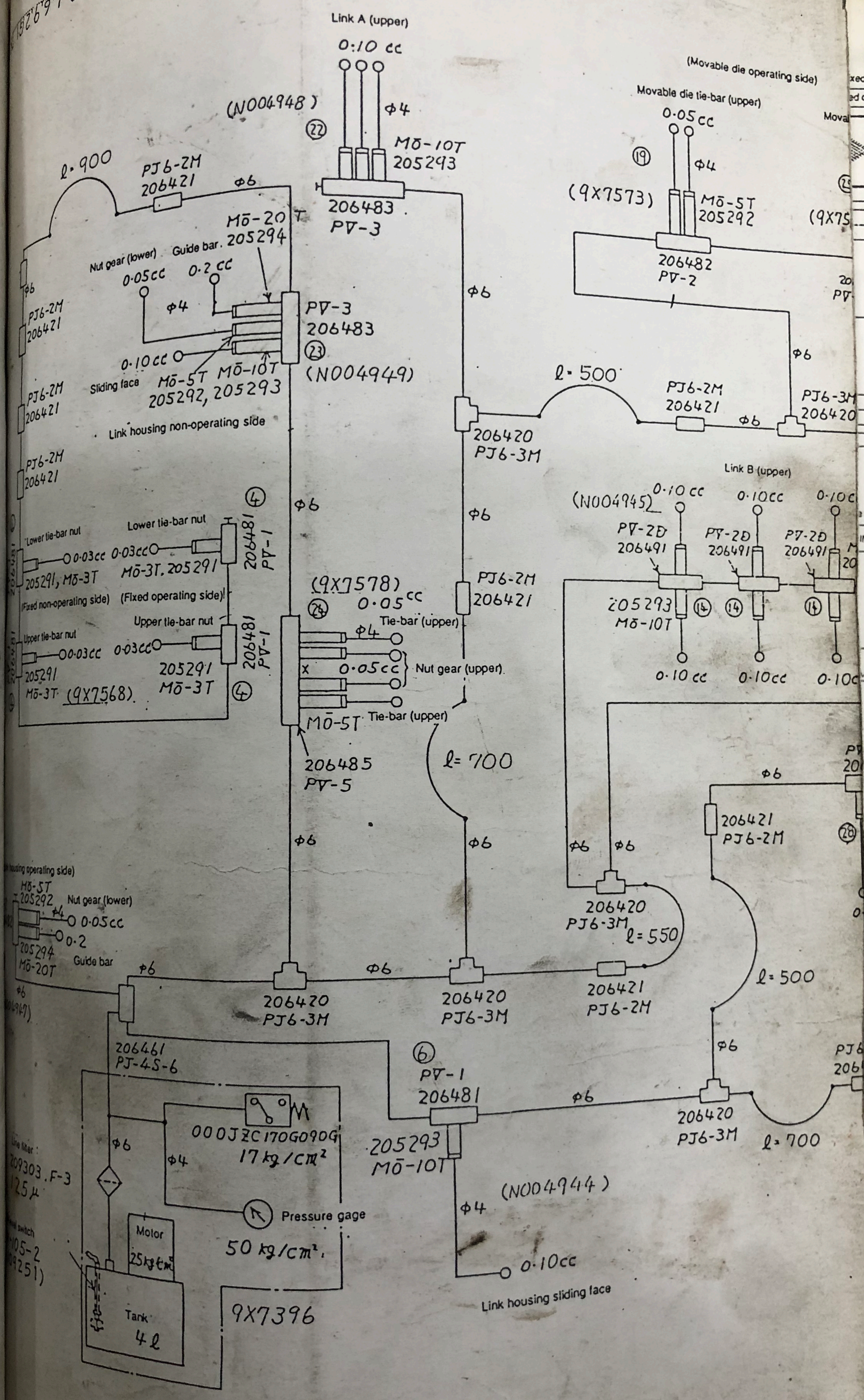




External View  
A602813



H 31.6.97  
269722



Link A (upper)

0.10 cc

(N004948)

φ4

M5-10T  
205293

206483  
PV-3

(Movable die operating side)

Movable die tie-bar (upper)

0.05 cc

φ4

M5-5T  
205292

(9X7573)

206482  
PV-2

l=900

PJ6-2M  
206421

φ6

M5-20  
205294

Nut gear (lower)

Guide bar

0.05 cc

0.2 cc

φ4

Sliding face

M5-5T  
205292

M5-10T  
205293

Link housing non-operating side

l=500

PJ6-2M  
206421

PJ6-3M  
206420

PJ6-2M  
206421

PJ6-2M  
206421

PJ6-2M  
206421

Lower tie-bar nut

Lower tie-bar nut

0.03 cc

0.03 cc

205291, M5-3T

M5-3T, 205291

(Fixed non-operating side)

(Fixed operating side)

Upper tie-bar nut

Upper tie-bar nut

0.03 cc

0.03 cc

205291

205291

M5-3T

M5-3T

(9X7568)

(9X7578)

0.05 cc

φ4

x 0.05 cc

Nut gear (upper)

M5-5T

206485  
PV-5

l=700

(N004945)

0.10 cc

0.10 cc

0.10 cc

PV-2B  
206491

PV-2B  
206491

PV-2B  
206491

205293  
M5-10T

0.10 cc

0.10 cc

0.10 cc

(Link housing operating side)

M5-5T  
205292

Nut gear (lower)

0.05 cc

0.2

205294

M5-20T

Guide bar

φ6

206420  
PJ6-3M

206420  
PJ6-3M

206421  
PJ6-2M

l=500

206461  
PJ-4S-6

PV-1  
206481

206420  
PJ6-3M

l=700

Motor

000JZC170G090G  
17 kg/cm²

Pressure gage  
50 kg/cm²

Motor  
25 kg/cm²

Tank  
4 L

9X7396

205293  
M5-10T

(N004944)

0.10 cc

Link housing sliding face

Fixed core 1 return

Fixed core 1 IN

Movable die

20

PV

(9X75

20

PV

20

PV

20

PV

1 IN/return

1 IN/return

20

M

20

MIN

PV

20

0

0

0

0

0

0

0

0

0

0

0

0

0

0

0

0

0

0

0

0

0

0

0

0

0

0

0

0

0

0

0

0

0

0

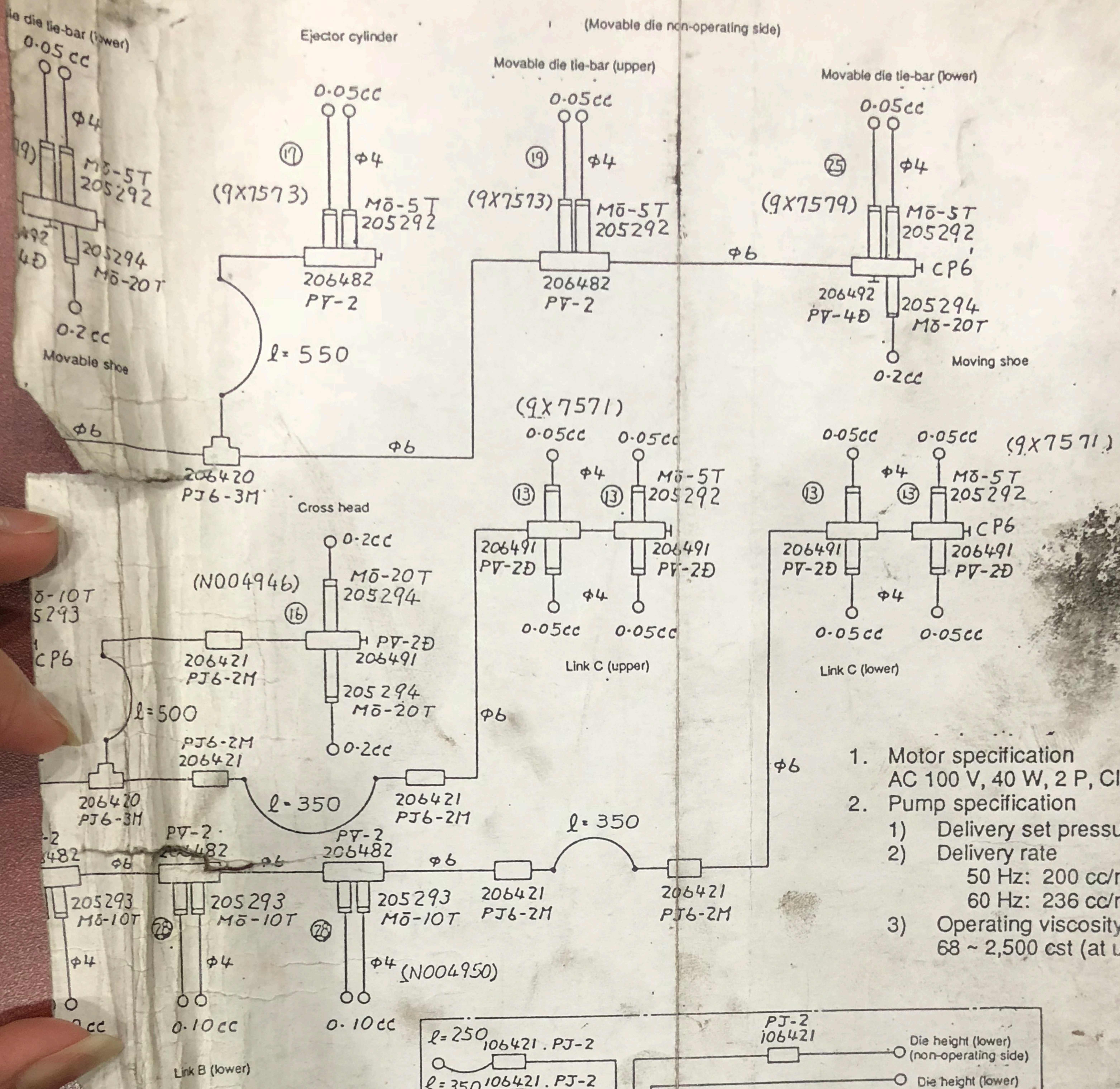
0

0

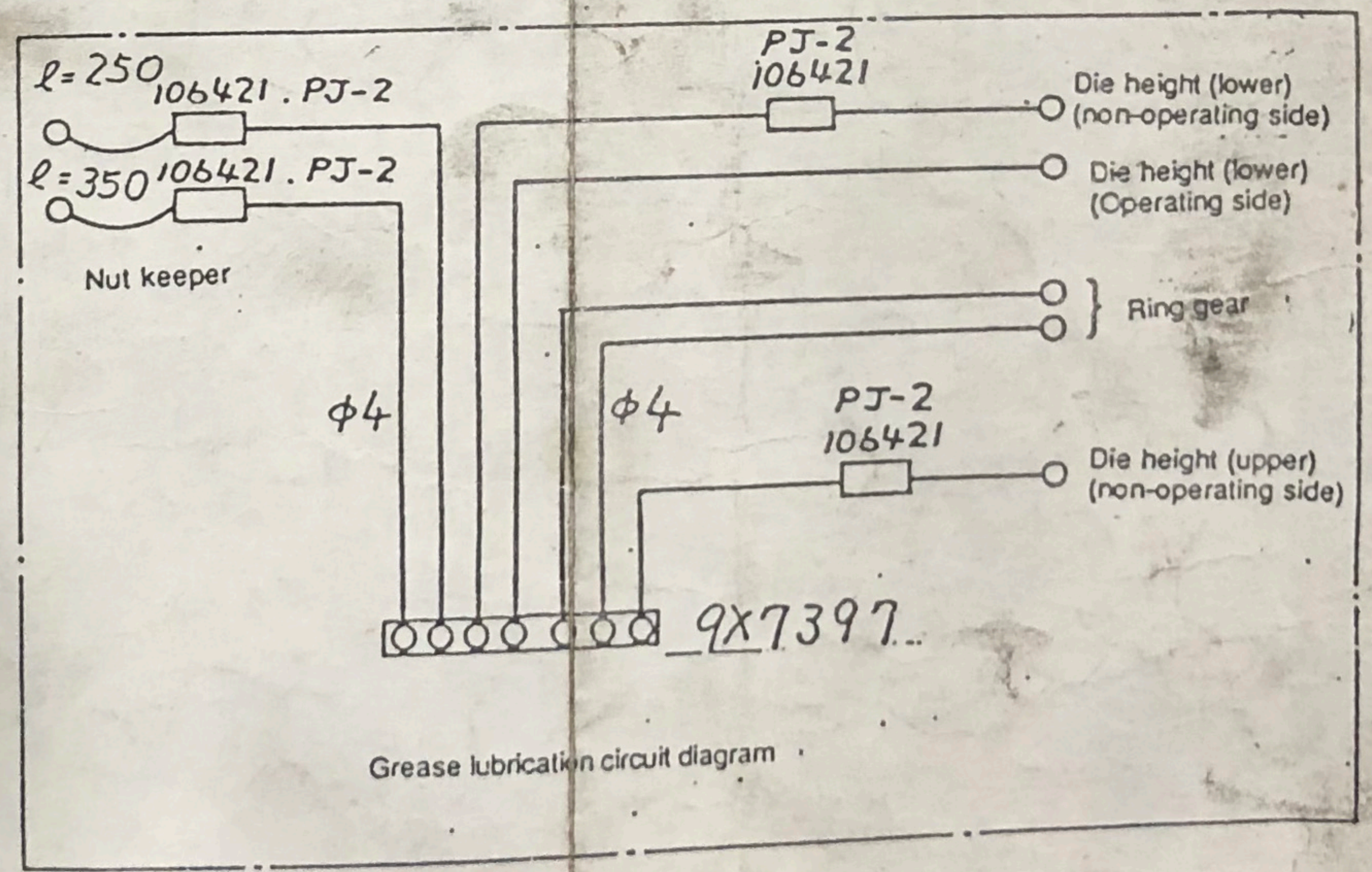
0

0



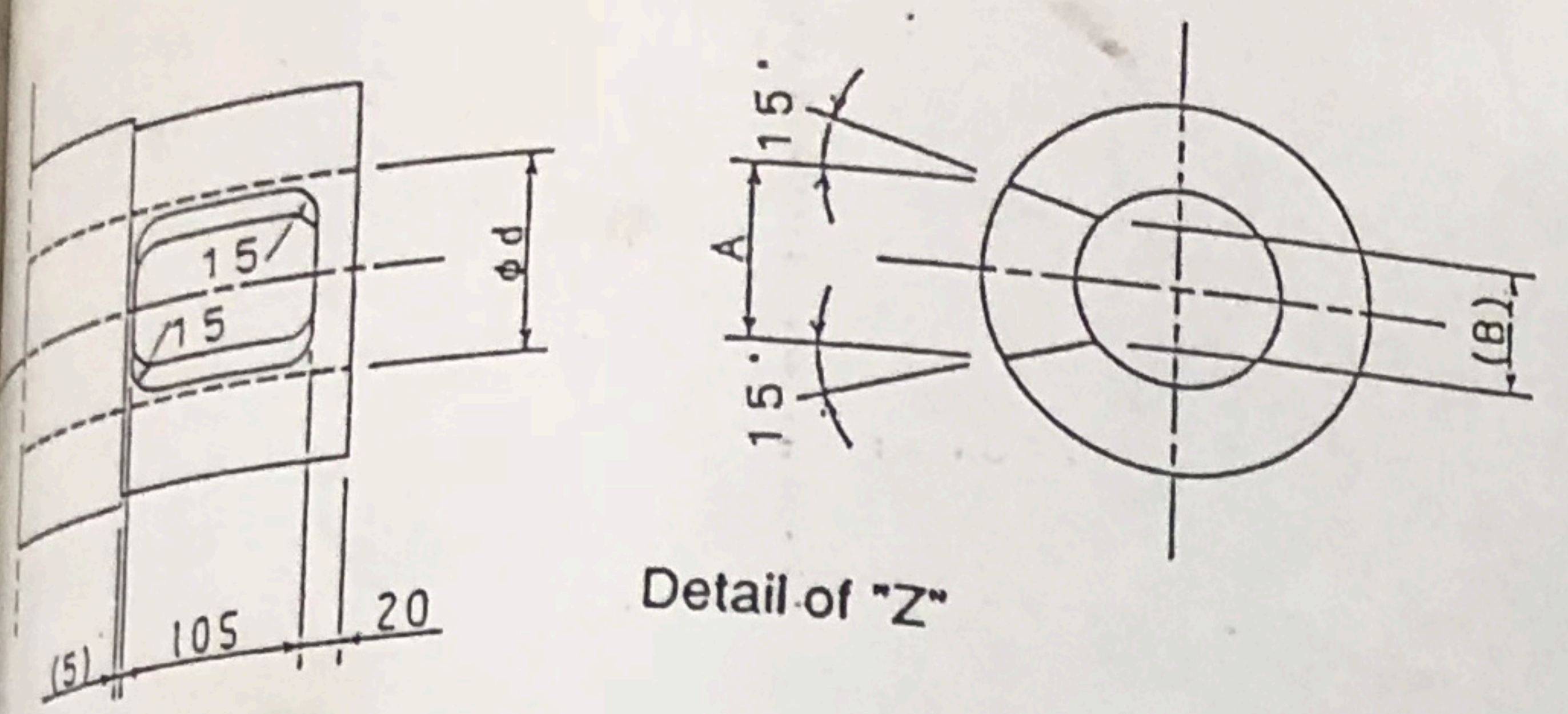


1. Motor specification  
AC 100 V, 40 W, 2 P, Class E
2. Pump specification
  - 1) Delivery set pressure: 25 kg/cm<sup>2</sup>
  - 2) Delivery rate  
50 Hz: 200 cc/min.  
60 Hz: 236 cc/min.
- 3) Operating viscosity  
68 ~ 2,500 cst (at use)



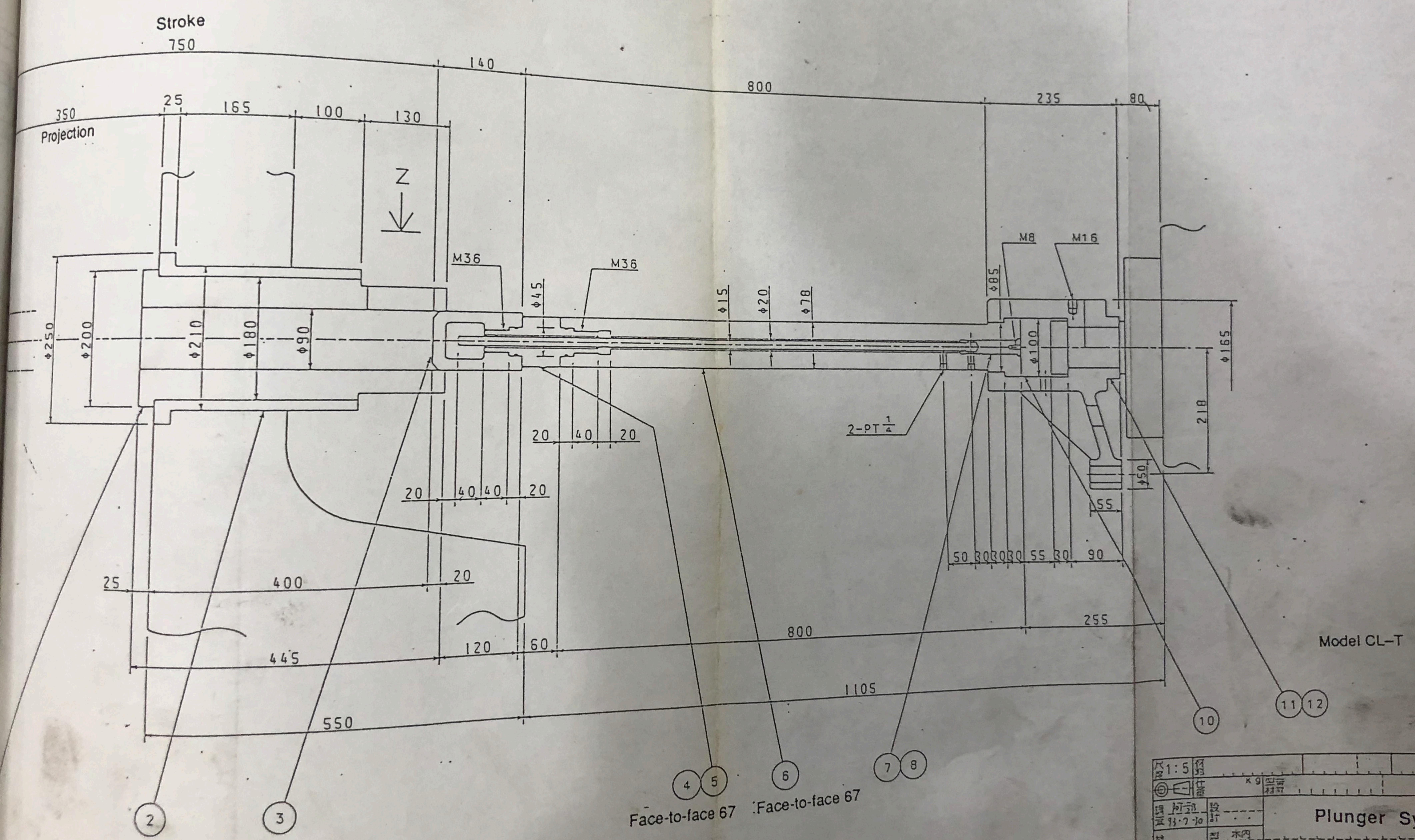
Lubrication Circuit Diagram  
 DC800CL  
 東芝機械株式会社 H31692G





No.	ød	A	(B)	Plunger tip face-to-face
1	80	70	44	
2	85	75	50	67
3	90	80	56	77
4	95	85	62	77
5	100	90	69	77

No.	Part No.	Part Name & Type	G1
1	362X3703	Plunger sleeve	1
2	463S5701	Flanged bushing	1
3	6R341103	Plunger tip	1
4	6T102502	Fitting	2
5		"O" ring, 4D-P39	1
6	622W7701	Plunger rod	1
7	N01160G01	Cooling pipe assembly	1
8		"O" ring, 4D-P20	1
9			
10	438S5701	Spacer	1
11	H35108G01	Coupling	1
12		Hexagon socket head cap screw, 16x50	6



Face-to-face 67

比例 1:5	材料	重量	数量	日期
①	仕様	× 9	設計	材料 MZ
編 訂	設計	Plunger System		
製 型	本 図	DC800CL (標準)		
東芝機械株式会社 H34242G1				